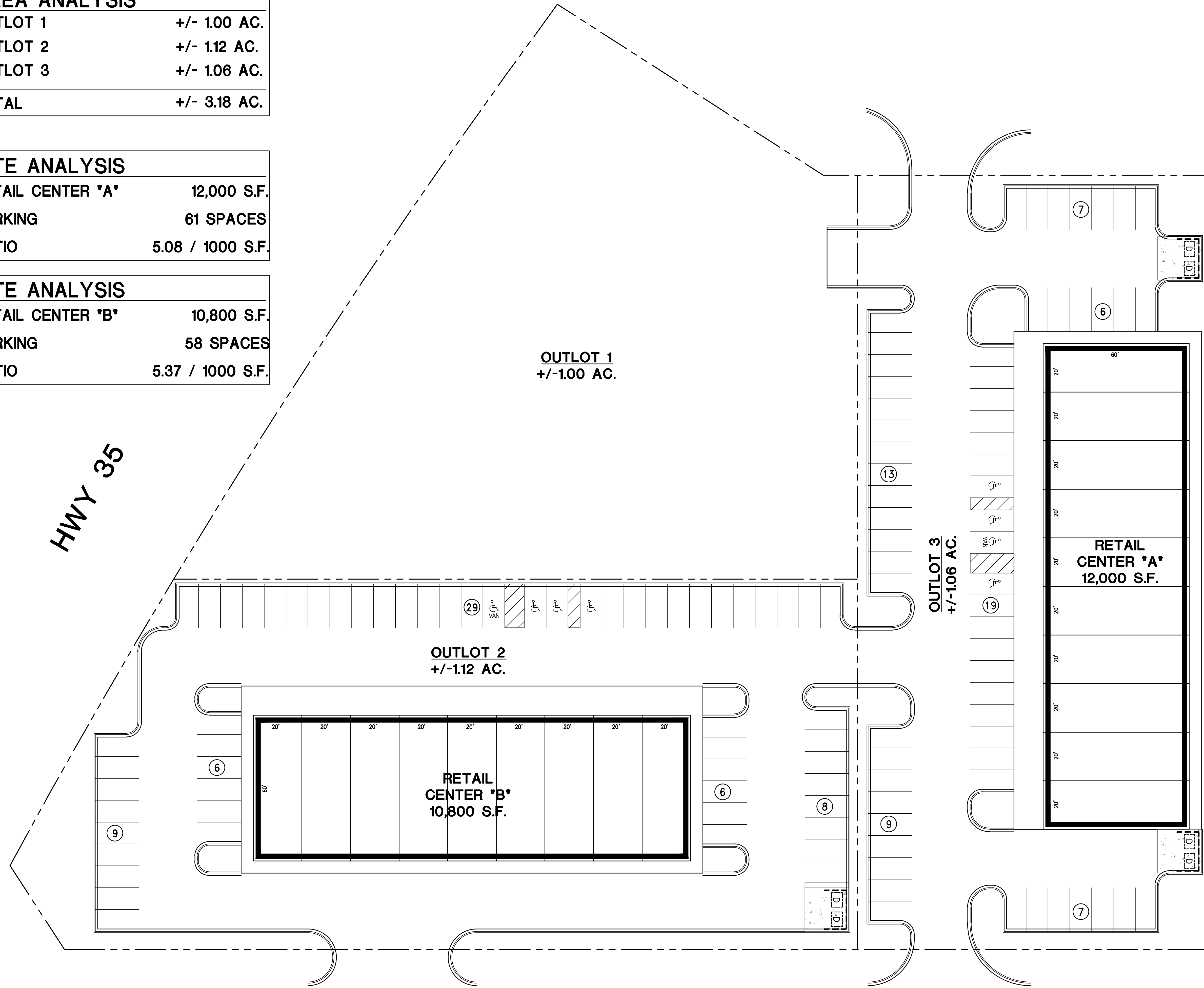


AREA ANALYSIS	
OUTLOT 1	+/- 1.00 AC.
OUTLOT 2	+/- 1.12 AC.
OUTLOT 3	+/- 1.06 AC.
TOTAL	+/- 3.18 AC.

SITE ANALYSIS	
RETAIL CENTER 'A'	12,000 S.F.
PARKING	61 SPACES
RATIO	5.08 / 1000 S.F.

SITE ANALYSIS	
RETAIL CENTER 'B'	10,800 S.F.
PARKING	58 SPACES
RATIO	5.37 / 1000 S.F.



HWY 35

OUTLOT 1
+/-1.00 AC.

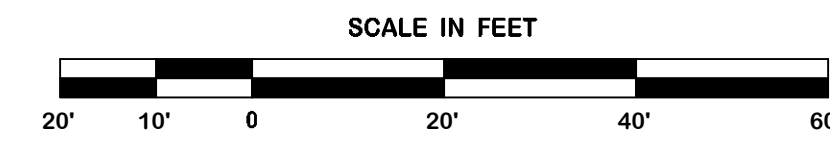
OUTLOT 2
+/-1.12 AC.

OUTLOT 3
+/-1.06 AC.

RETAIL CENTER 'B'
10,800 S.F.

RETAIL CENTER 'A'
12,000 S.F.

Not For Construction
**CONCEPTUAL
SITE PLAN**



**** NOTE ****
THIS DRAWING IS FOR CONCEPTUAL PURPOSES ONLY. DESIGN MAY VARY DEPENDING ON ACTUAL TOPOGRAPHIC & BOUNDARY SURVEY, DRAINAGE, ETC. THIS ADDITIONAL INFORMATION COULD CAUSE CHANGES IN TOTAL SITE AREA REQUIRED DUE TO SLOPES, PARKING, ETC.

REVISION	BY

DDG
DUPLANTIS DESIGN GROUP, PC
CIVIL ENGINEERING - ARCHITECTURE
34 LOUIS PRIMA DRIVE COVINGTON, LA 70433
WWW.DDGP.COM PHONE 985-249-6860 FAX 985-249-6190
THIBODAUX | COVINGTON | HOUSTON | BATON ROUGE | HOUMA

STAMP

SIGNATURE: _____
DATE: _____

PROPOSED RETAIL CENTER
PORT LAVACA, TX
CALHOUN COUNTY
FOR WHITE OAK DEVELOPMENT
MEMPHIS, TN

DRAWN DJG
CHECKED THB
ISSUED DATE 5-9-14
ISSUED FOR ---
PROJECT NO. 14-289
FILE 14-289 P-1
SHEET P-1