

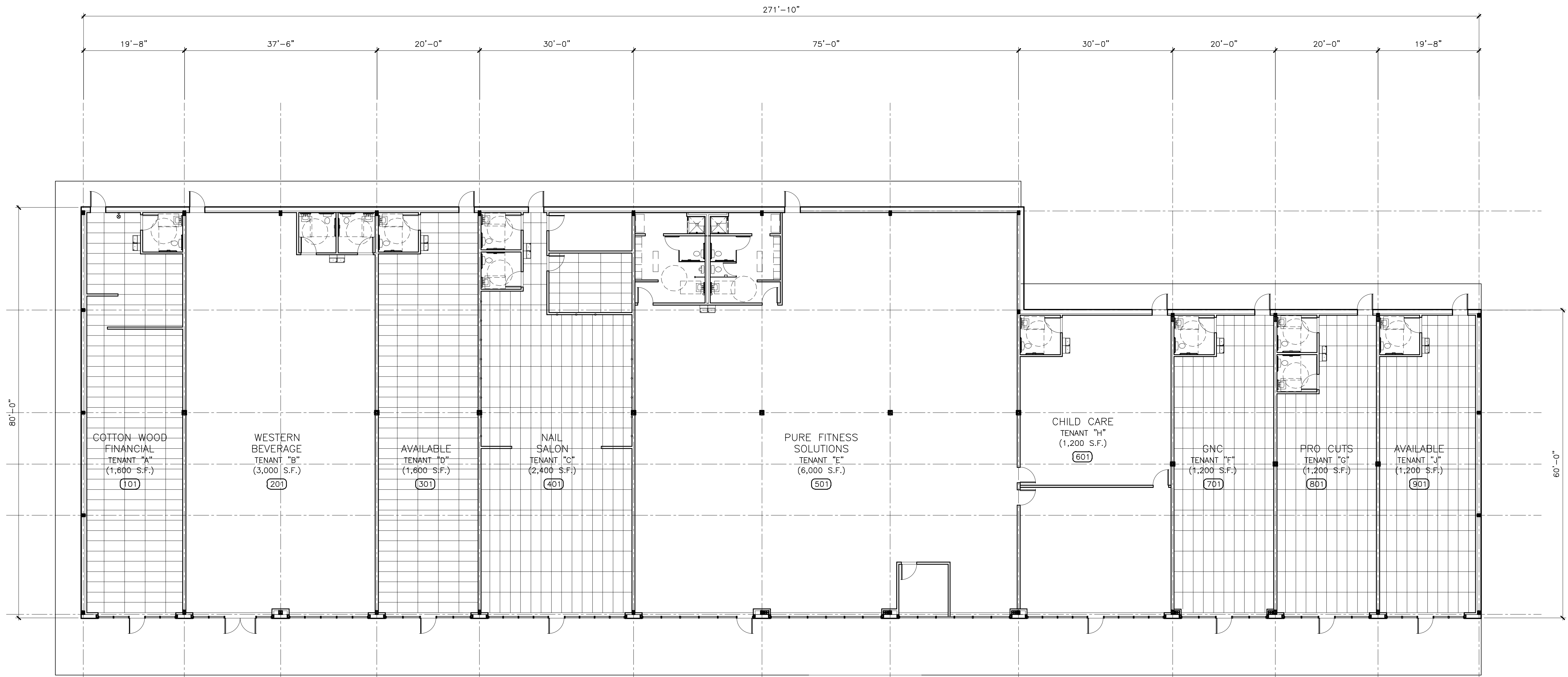
DATE	DESCRIPTION	BY

DDG
 DUPLANTIS DESIGN GROUP, PC
 CIVIL ENGINEERING + ARCHITECTURE
 100 BAWBY ROAD, SUITE A HOUMA, LA 70960
 WWW.DDGPC.COM PHONE: 985.868.0943 | FAX: 985.868.8877
 THIBODAUX | COVINGTON | HOUSTON | BATON ROUGE | HOUMA

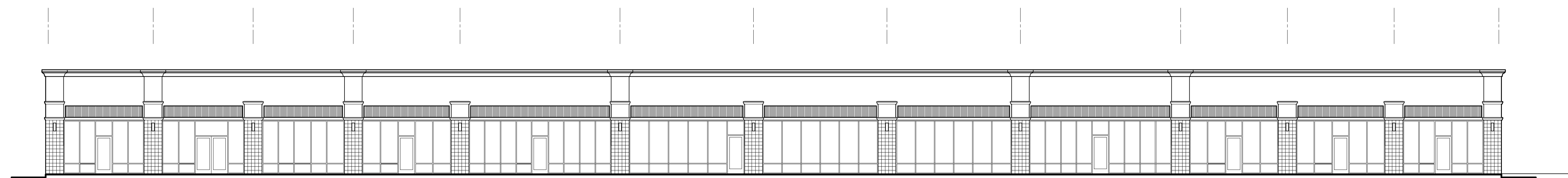
SIGNATURE _____
 DATE _____

NEW RETAIL CENTER
 FOR
 WHITEOAK DEVELOPMENT, LLC
 CORPUS CHRISTI, TEXAS
 X X

DRAWN	CJC
CHECKED	SMV
DATE	9/9/2013
SCALE	AS NOTED ON DWG
PROJECT NO.	13-339A
FILE:	
SHEET	A1.1



1 FLOOR PLAN
 3/32" = 1'-0"



2 FRONT ELEVATION
 3/32" = 1'-0"